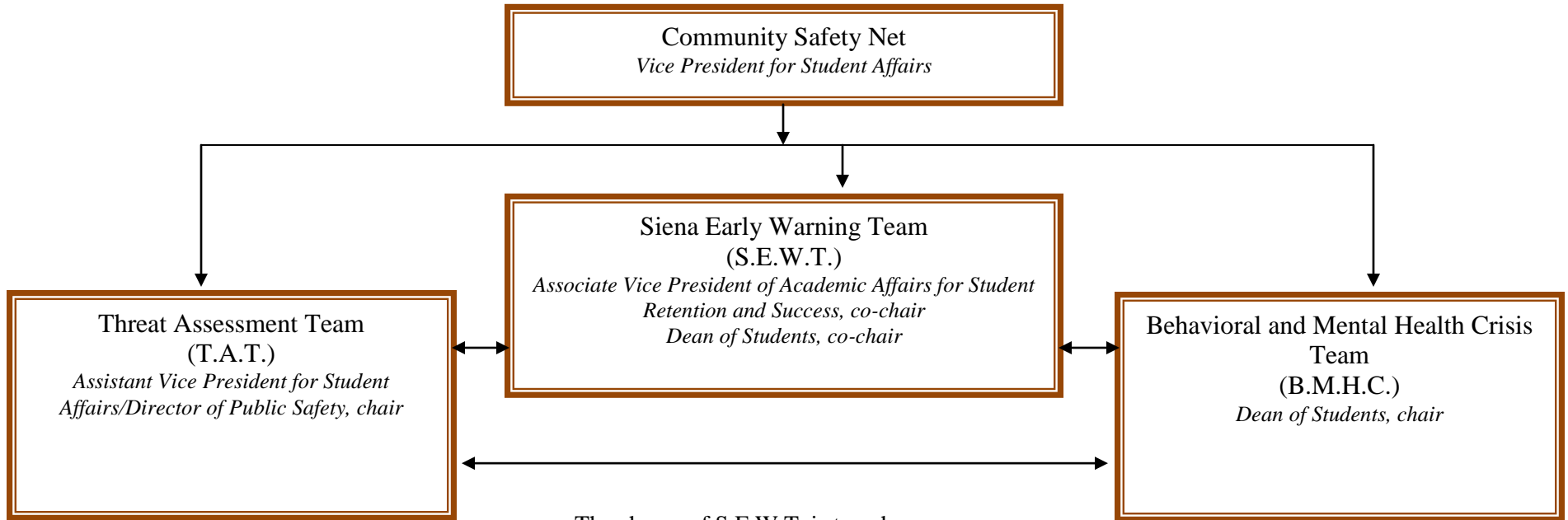


Siena College believes that the safety and well-being of all members of our community is paramount. There are several different ways, depending on the particular presenting issue, that members of the community can report issues of concern through the Community Safety net. Below is a description of each process, the type of presenting issue, and whom to call.

Siena College



- The charge of the T.A.T. is to receive, investigate and determine appropriate response to all reports of possible threats to person or property.
- Public Safety is the contact point for all threats.

Contact:
AVPSA/Director of Public Safety:
518-783-2376

- The charge of S.E.W.T. is to enhance student success. S.E.W.T. is a group of administrators who meet regularly throughout the year to share information on students who are academically at-risk students. Using case management approach, outreach is made to the student with information as to how to access support. Concerns are academic in nature.
- AVPAA or Dean of Student, are the primary contact points.

Contact:
AVPAA: 518-782-6567 or
Dean of Students: 518-783-2328

- The charge of the B.M.H.C. team is to review, assess, and intervene when a student has a behavioral or mental health crisis that puts him/her at risk, other members of the community at risk, or is so disruptive that it impedes the educational mission of the College.
- Center for Counseling and Student Development, Public Safety, and/or the Dean of Students Office are the primary contacts.

Contact:
Dean of Students: 518-783-2328
Center for Counseling: 518-783-2342
Public Safety: 518-783-2376